

MESSBOI 40 BAE

Length measuring device with mechanical counter

Mechanical length measuring with modular design

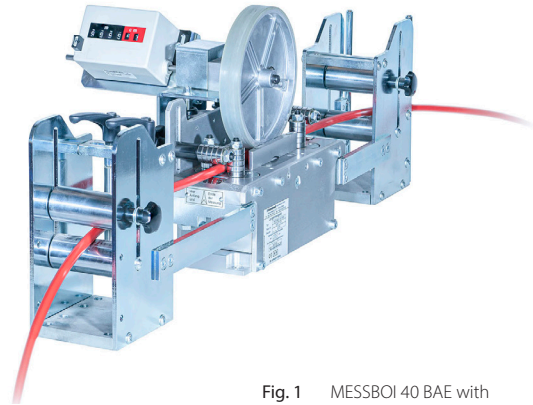


Fig. 1 MESSBOI 40 BAE with inlet and outlet roller cages

MESSBOI 40 BAE

- Mechanical length measuring device for winding material-Ø max. 40 mm

Functionality:

Length measuring device for winding goods up to an outer diameter of 40 mm with mechanical counter. Depending on the application we offer various versions to customer specification. These measuring devices consist of a solid base frame with guide rollers to which the measuring device is mounted. Measuring scanning by means of measuring wheel. If requested, also available with stainless steel-counter roller for the measuring of steel ropes.

Basic equipment:

- One set of inlet and outlet rollers of adjustable height and centrally adjustable width
- Adding mechanical counter with reset button

Supplementary equipment:

- **Alu profile** with mounting plates for measuring device, roller cages, lever shear and housing for counter
- **Inlet and outlet roller cages**
- **Conformity assessment / MID (formerly first calibration)** of the length measuring device according module F1 with additional inlet and outlet roller cages is approved by German calibration authority for a period of two years from date of delivery, valid for all EEA member states. Conformity assessment has to be carried out in the manufacturing firm. Prolongation of this approval after 2 years had expired is not included in the delivery. **Only approved for useage in direct sales!**

Basic device MESSBOI 40 BAE

Technical data	MESSBOI 40 BAE*
Part No.	85100003
Measuring range (with conformity assessment)	1 - 40 mm (2 - 25 mm)
Speed conformity assessed	max. 80 m / min
Circumference of measuring wheel	0,5 m
Error limit regarding accuracy class III with roller cages	+ / - 0,5 %
Display of counter	9999,99 m
L x W x H (without roller cages)	approx. 320 x 320 x 280 mm
Material	steel / stainless steel / aluminium
Weight	approx. 12 kg
* Note: MESSBOI 40 BAE is also available with stainless steel counter roller for wire rope or steel cable. Part No. 86000316	

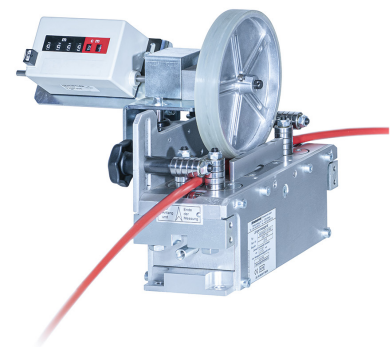


Fig. 2 MESSBOI 40 BAE basic device

MESSBOI 40 BAE

Length measuring device with mechanical counter

Roller cages



Fig. 3 Inlet and outlet roller cages

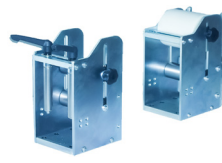


Fig. 4 Inlet and outlet roller cages

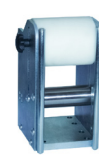


Fig. 5 Inlet roller cage



Fig. 6 Inlet or outlet roller cage

Technical data	Inlet and outlet roller cages (pair)	Inlet and outlet roller cages (pair)	Inlet roller cage (piece)	Inlet or outlet roller cage (piece)
Part No.	85100185	85100186	85100189	86001454
Suitable for MESSBOI 40 BAE	✓	✓	✓	✓
For winding from an unwinder	✓	-	-	✓
For winding out of a drum rack	-	✓	✓	-
Rollers horizontal adjustable	✓	✓	✓	✓
Rollers horizontal and vertical adjustable	✓	✓	-	✓
Material-Ø	max. 40 mm	max. 40 mm	max. 40 mm	max. 40 mm
Guide outlet rollers-Ø	35 mm	35 mm	-	-
Guide inlet rollers-Ø	35 mm	80 mm	80 mm	35 mm
Weight	approx. 10 kg / pair	approx. 10 kg / pair	approx. 5 kg	approx. 5 kg
Housing	steel zinc-plated	steel zinc-plated	steel zinc-plated	steel zinc-plated
Guide rollers inlet	stainless steel	plastic	plastic	stainless steel
Guide rollers outlet	stainless steel	stainless steel	-	-

Conformity assessment

Technical data Conformity assessment / MID (formerly first calibration)

Part No. 146

Conformity assessment of the length measuring device according module F1 with additional inlet and outlet roller cage is approved by German calibration authority. Valid for an unlimited period in the EEA. Conformity assessment has to be carried out in the manufacturing firm. Re-assessment after two years is not required, but maintenance by Kabelmat is recommended. **Only approved for useage in direct sales!**

Alu profile and lever shear

Technical data Alu profile for MESSBOI 40 for mounting onto MESSROL 670 / 1000

Part No. 86100005

With mounting plates for roller cages, measuring device and lever shear

Technical data MATIS 40 lever shear for cable (fine-wire)

Part No. 86001132

Material-Ø max. 40 mm

B x W x H approx. 110 x 130 x 720 mm

Weight approx. 8,3 kg

Material Blades made of hardend tool steel

Cut release via hand lever.

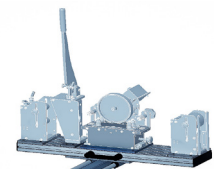


Fig. 7 Alu profile with MESSBOI 40 BAE, MATIS 40 and inlet and outlet roller cages



Fig. 8 MATIS 40 lever shear