

MESSBOI 40 LC / LC-MID

Length measuring device with digital counter

Data storage for a permanent and tamper-resistant storage of all measurements

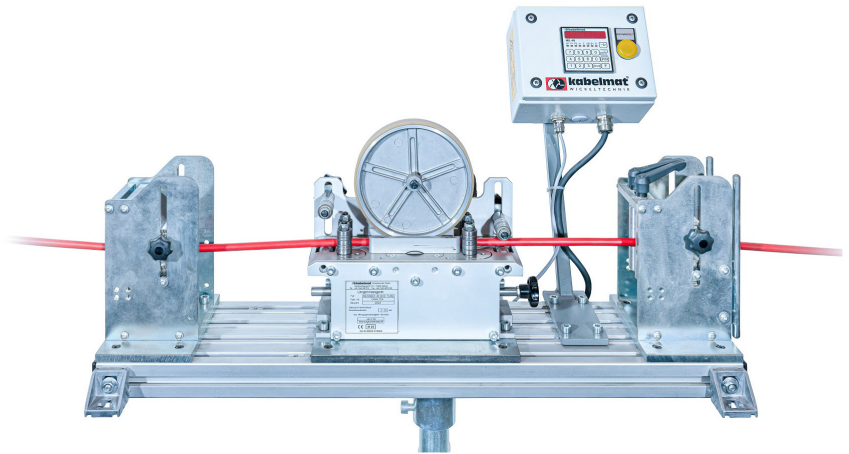


Fig. 1 MESSBOI 40 LC with counter in housing, aluminium profile, inlet and outlet roller cages, printer holder and printer

MESSBOI 40 LC / LC-MID

- Digital length measuring device for winding material- \varnothing max. 40 mm

Functionality:

Length measuring device with digital counter. Depending on the application we offer various versions due to customer specification. This measuring device consists of a solid base frame with guide rollers to which the measuring device is mounted. Measuring scanning by means of measuring wheel.

Basic equipment:

- Preselection counter integrated in housing, mounted besides the measuring device
- One set of inlet and outlet rollers of adjustable height and centrally adjustable width
- A rotary pulse encoder with two channels A+B, 24 VDC and connection cable
- A preselection counter LC MID with interface RS 232 with two potential-free electric contacts for drive of high- / low speed function of an adjustable winding drive or a signal lamp. The counter is equipped with a plastic foil keyboard for inputting the data. Possibility of conformity assessment (formerly first calibration) of the length measuring device with Kabelmat - preset counter and rotary pulse encoder in connection with additional infeed and outfeed roller cages.
- The calibration speed is monitored by a signal lamp

Supplementary equipment:

- **Angle drive for easy operation of the central adjustment of vertical guides**
- **Cable end detection**
- **Sensor for measuring the cable diameter for automatic traversing and for switching off the winding drive at the cable end**
- **Inlet and outlet roller cages**
- **Conformity assessment / MID (formerly first calibration)** of the length measuring device according module F with additional inlet and outlet roller cages is approved by German Authorities for a period of two years from date of delivery, valid for all EEA Member States. Conformity has to be carried out in the manufacturing firm. Prolongation of this approval after 2 years had expired is not included in the delivery.
 - **Automatic storage** of the cutting data
 - **Label printer** with interface for preselection counter
 - **Printer holder** for label printer

MESSBOI 40 LC / LC-MID

Length measuring device with digital counter

Basic device MESSBOI 40 LC / LC-MID

Technical data	MESSBOI 40 LC / LC-MID
Part No.	85100455
With 2 potential-free change-over contact with pre-and limit switching	
Round cable-Ø with MID / conformity assessment	2 - 40 mm
Tube-Ø with MID / conformity assessment	2 - 40 mm
Steel cable-Ø with MID / conformity assessment	2 - 15 mm
Thickness range flat cable with MID / conformity assessment	2 - 15 mm
Width range flat cable with MID / conformity assessment	10 - 40 mm
Speed conformity assessed	max. 250 m / min
Circumference of measuring wheel	0,5 m
Rotary pulse encoder	500 Imp / per turn 24 VDC
Error limit regarding accuracy class III with roller cages	+ / - 0,5 %
Display of counter	99999,999 m
L x W x H (without roller cages)	approx. 400 x 310 x 400 mm
Weight	approx. 10 kg

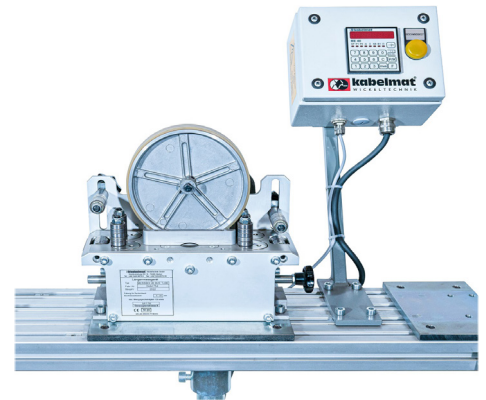


Fig.2 MESSBOI 40 LC with counter in housing

Roller cages



Fig. 3 Inlet and outlet roller cages

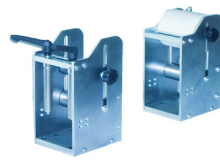


Fig. 4 Inlet and outlet roller cages

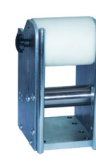


Fig. 5 Inlet roller cage



Fig. 6 Inlet or outlet roller cage

Technical data	Inlet and outlet roller cages (pair)	Inlet and outlet roller cages (pair)	Inlet roller cage (piece)	Inlet or outlet roller cage (piece)
Part No.	85100185	85100186	85100189	86001454
Suitable for MESSBOI 40 BAE	✓	✓	✓	✓
For winding from an unwinder	✓	-	-	✓
For winding out of a drum rack	-	✓	✓	-
Rollers horizontal adjustable	✓	✓	✓	✓
Rollers horizontal and vertical adjustable	✓	✓	-	✓
Material-Ø	max. 40 mm	max. 40 mm	max. 40 mm	max. 40 mm
Guide outlet rollers-Ø	35 mm	35 mm	-	-
Guide inlet rollers-Ø	35 mm	80 mm	80 mm	35 mm
Weight	approx. 10 kg / pair	approx. 10 kg / pair	approx. 5 kg	approx. 5 kg
Housing	steel zinc-plated	steel zinc-plated	steel zinc-plated	steel zinc-plated
Guide rollers inlet	stainless steel	plastic	plastic	stainless steel
Guide rollers outlet	stainless steel	stainless steel	-	-

MESSBOI 40 LC / LC-MID

Length measuring device with digital counter

Conformity assessment and accessory

Technical data	Conformity assessment / MID (formerly first calibration)
Part No.	242
<p>Conformity assessment of the length measuring device according module F with additional inlet and outlet roller cages approved by German calibration authority for a period of two years from date of delivery, valid for all EEA member States. Conformity has to be carried out in the manufacturing firm. Prolongation of this approval after two years had expired is not included in the delivery. Presence of the customer is not needed.</p>	

Technical data	Label printer
Part No.	5101.000
<p>With interface to the preselection counter The company logo must be provided by the customer when ordering. In *.bmp format, black / white, Resolution 200dpi, max. size: 45 x 20 mm (W x H)</p>	

Technical data	Printer holder
Part No.	85100949
<p>Holder for label printer</p>	

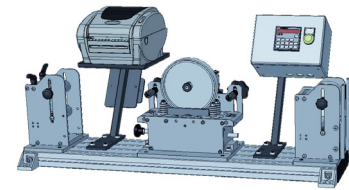


Fig. 7 MESSBOI 40 LC-MID with counter in housing, inlet and outlet roller cages, holder for label printer and label printer



Fig. 8 Label printer



Fig. 9 Example label with customer logo

Alu profile and lever shear

Technical data	Alu profile for MESSBOI 40 for mounting onto table
Part No.	86100006
<p>With mounting plates for roller cages, measuring device and lever shear</p>	

Technical data	Alu profile for MESSBOI 40 for mounting onto MESSROL 670 / 1000
Part No.	86100005
<p>With mounting plates for roller cages, measuring device, lever shear and housing for counter</p>	

Technical data	MATIS 40 M lever shear for cables (fine-wire)
Part No.	86001132
Material-Ø	max. 40 mm
B x W x H	approx. 110 x 130 x 720 mm
Material	Blades made of oxide ceramics
Weight	approx. 8,3 kg
<p>Cut release via hand lever.</p>	

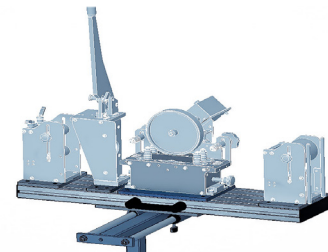


Fig. 10 Alu profile

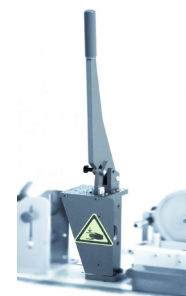


Fig. 11 MATIS 40 M lever shear