

UMROL 1000 AUF

Pintle winder for coils and drums

Winding big drums at the touch of a button



Fig. 1 UMROL 1000 AUF with closed cover

UMROL 1000 AUF

- Pintle winder for coils and drums

Functionality:

This motor driven coil and drum pintle winders are suitable for winding goods, such as cables, tubes, hoses, steel ropes, plastic profiles etc. onto coils, spools or drums and simultaneously, measuring and cutting-to-length.

The empty drum on which the material is to be coiled, is rolled to the loading place. The previously opened centre sleeve arms are then moved together to the corresponding take-over position by the operator's push of a button. When the drum is clamped by the centre sleeves, the same move upwards in winding position. On the operating panel the drum can be turned forward and backward in manual operation. Prior to winding in automatic mode, the length to be cut is input with the keyboard of the Kabelmat preselection counter LC MID. In automatic winding mode, the preselected length is coiled. The drive traces the length according to the potentiometer adjustment on the operating panel and stops automatically once the length is reached. Soft start and soft stop of the drive according to the programmed ramps. The additional inching function is adjusted once only in the preselection counter. When the coiled material is cut off and the end is fixed, the drum is lowered again by the push of a button, it is rolled out of the machine and removed.

Technical Data	UMROL 1000 AUF
Part No.	2025.000
Drum-Ø	400 - 1000 mm (DIN 46391)
Drum width	120 - 710 mm
Drum weight	max. 600 kg
Standard drives (special speed on request)	75 min ⁻¹ (2,2 kW) or 130 min ⁻¹ (4,0 kW)
Inlet height of winding material	approx. 1230 mm
Traversing width	approx. 700 mm
Running direction	right to left
L x W x H	approx. 2135 x 1770 x 2245 mm
Weight	approx. 1100 kg

Max. winding material-Ø depending on the characteristics of the winding material.

UMROL 1000 AUF

Pintle winder for coils and drums

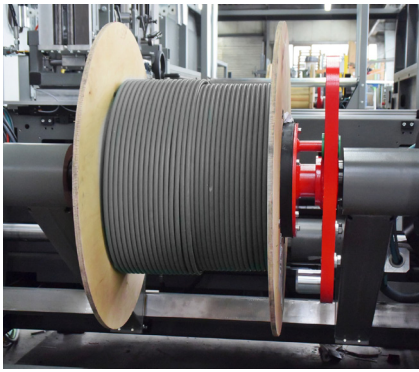


Fig. 2 Frictionally engaged drum driver

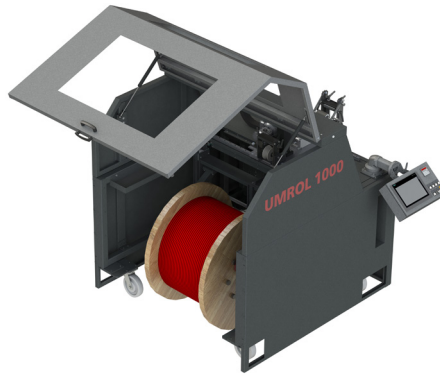


Fig. 3 UMROL 1000 AUF mobile with open cover

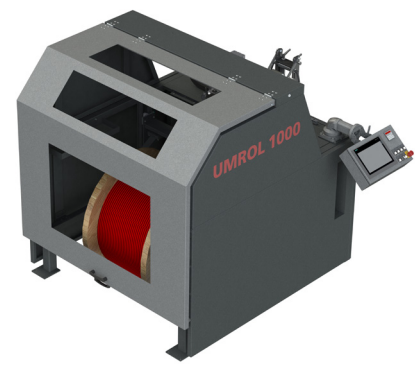


Fig. 4 UMROL 1000 AUF stationary with closed cover

Basic equipment:

- Steel profile frame with two breakable steering rollers and two fixed rollers or stationary design: to be screwed on the ground
- Grips for moving the machine
- Manually operated traversing slide provided for the installation of additional devices such as length measuring devices, material cutters as well as an automatic traversing unit
- Easy-to-handle and convenient drum loading with pintle arms driven by electric motor
- The functions lifting / lowering and tightening/releasing of the pintles are activated by push of a button
- Different cones for drum core drilling are insertable
- Holding fixture for coiler heads (quick-change system)
- The control panel with emergency switch is integrated in the base frame
- Additional control panel for positioning of the pintle arms, drum driver and emergency stop function
- Winding drive via geared motor with infinitely variable speed control and smooth starting of the machine
- Right-left handed rotation of the winding drive within the jogger operation mode
- Protective door for UMROL (available as collapsible door or as cover, requested for CE)

Recommended equipment:

- **Roller cages** before and after the length measuring device with adjustable ball beared rollers made of stainless steel requested for the calibration of the measuring devices
- **Length measuring device MESSBOI 40 LC / LC-MID or MESSBOI 80 LC / LC-MID**
 - Error limit, accuracy class III with additional inlet and outlet roller cages + / - 0,5 %
 - Conformity assessment of the length measuring device according module F is approved by German calibration authorities for a period of two years, valid in EEA
 - Conformity assessment line speed up to 250 m / min
 - Preselection counter with disconnecting contact of the winding drive
 - Diameter recognition
- **Manually, pneumatically or hydraulically operated cutting device** for cutting the winding material
- **Automatic traversing** consisting of geared motor with rotation speed controller. Traversing can be moved to any position via joystick within the set-up mode. This is important for the starting position of the winding drive. The motion reversing points can be stored by means of reference keys during standstill of the machine but also during winding operation. Traversing speed adapts automatically to the winding speed (synchronization). The complete traversing drive can be unlatched for manual traversing.
- **Coiler head incl. adapter** for coil winding. Insertable into the coiler head acceptance. Centrally and infinitely adjustable winding core diameter. With four binding slots and four winding core segments. Various models available.
- **Frictionally engaged drum driver** with sleeve for easy loading of the drum without carrier bolts. Consisting of two carriers for both pintle arms; cylindric drum loading

Further auxiliary equipment on request